

QUICK START GUIDE

This is a brief instruction guide to inform users how to setup their modem quickly once entering the configuration page.

Open browser; and input **http://192.168.1.1** in address bar. Press “Enter” key, and the entry dialog box will show up as in Figure 1.1. Input Username: **admin**, Password: **password** (capital sensitive), then press Enter, you will find you have been guided to the configuration page.



Figure 1.1

Step 1. Click “Quick Setup” on the left margin; enter into “Quick Setup” configuration page.

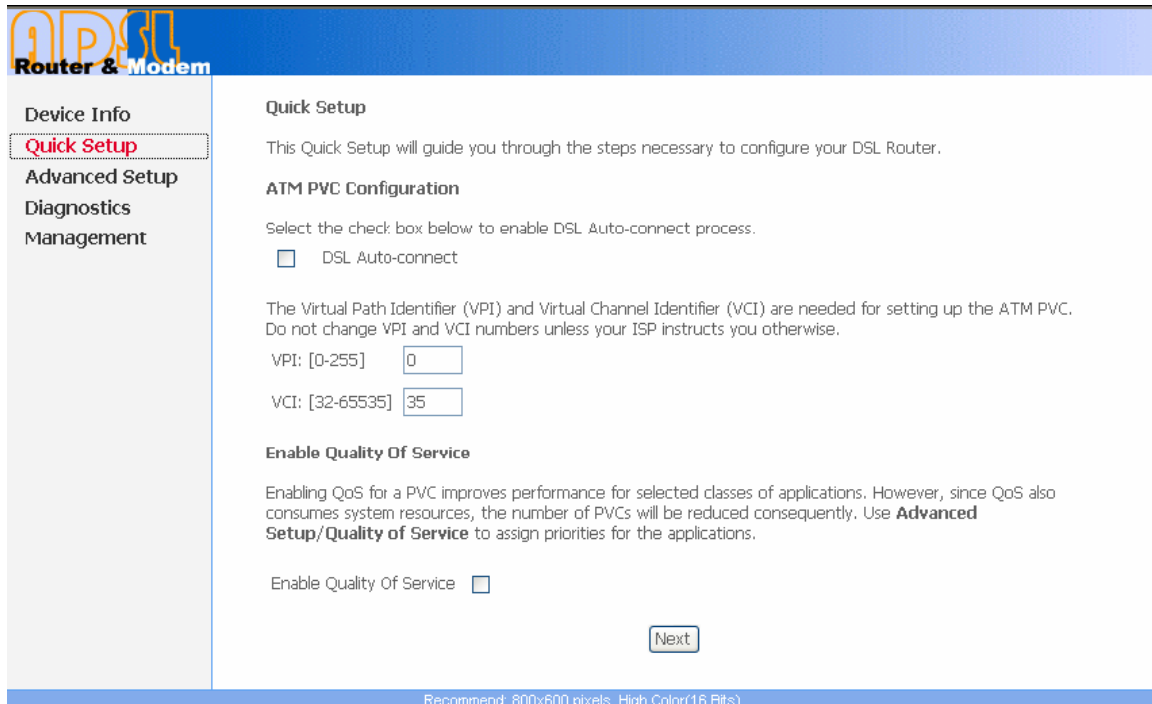
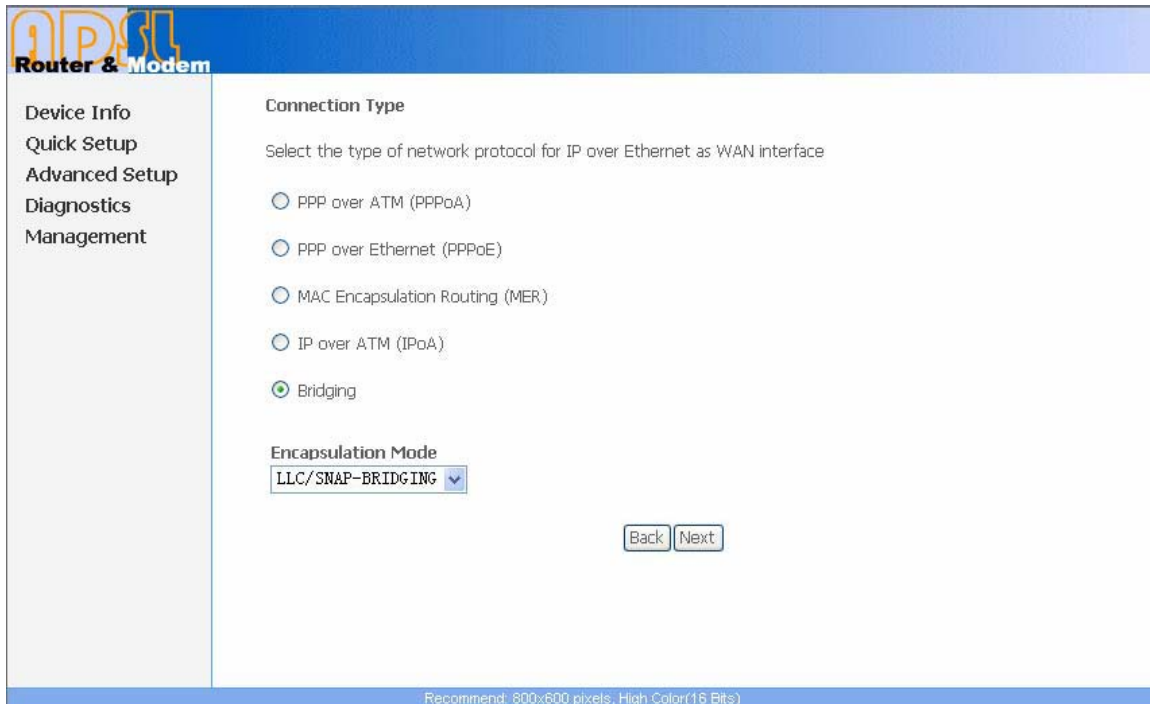


Figure 1.2

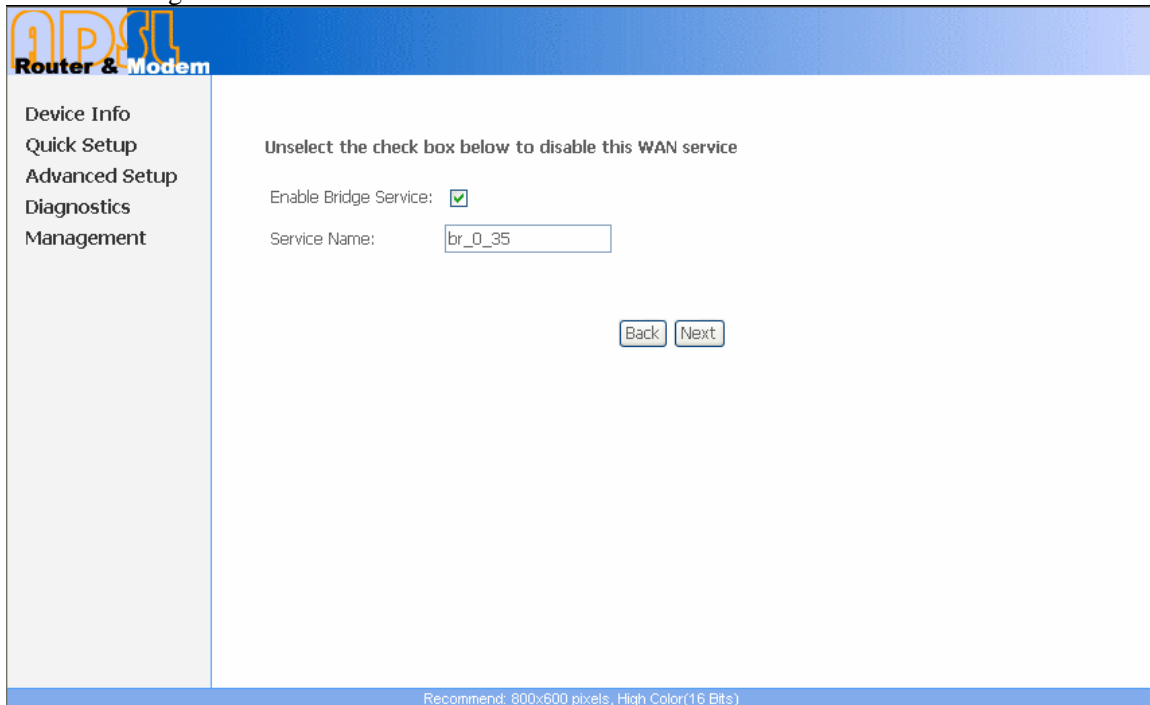
Step2. If you know the VPI/VCI value assigned by your ISP, input them to the boxes, then press “Next” to select “connection type”; otherwise, go to step 6.



The screenshot shows the 'Router & Modem' configuration interface. On the left is a navigation menu with options: Device Info, Quick Setup, Advanced Setup, Diagnostics, and Management. The main content area is titled 'Connection Type' and includes the instruction: 'Select the type of network protocol for IP over Ethernet as WAN interface'. There are five radio button options: PPP over ATM (PPPoA), PPP over Ethernet (PPPoE), MAC Encapsulation Routing (MER), IP over ATM (IPoA), and Bridging. The 'Bridging' option is selected. Below this is the 'Encapsulation Mode' section with a dropdown menu set to 'LLC/SNAP-BRIDGING'. At the bottom right are 'Back' and 'Next' buttons. A footer note reads: 'Recommend: 600x600 pixels, High Color(16 Bits)'.

Figure 1.3

Step3. Select one configuration of the five protocol modes (For Example, if the configuration is bridge encapsulation as shown in Figure 1.3, there is no need to configure any more parameters. Only use the third party dial-up software to connect to the Internet), select “Next”, go to the page as shown in Figure 1.4.



The screenshot shows the 'Router & Modem' configuration interface. On the left is a navigation menu with options: Device Info, Quick Setup, Advanced Setup, Diagnostics, and Management. The main content area is titled 'Unselect the check box below to disable this WAN service'. It contains a checkbox labeled 'Enable Bridge Service:' which is checked. Below it is a text input field labeled 'Service Name:' containing the text 'br_0_35'. At the bottom right are 'Back' and 'Next' buttons. A footer note reads: 'Recommend: 600x600 pixels, High Color(16 Bits)'.

Figure 1.4

Step4. Select “Next” again to Device Setup; input the DSL Router IP Address and Subnet Mask for your Local Area Network.

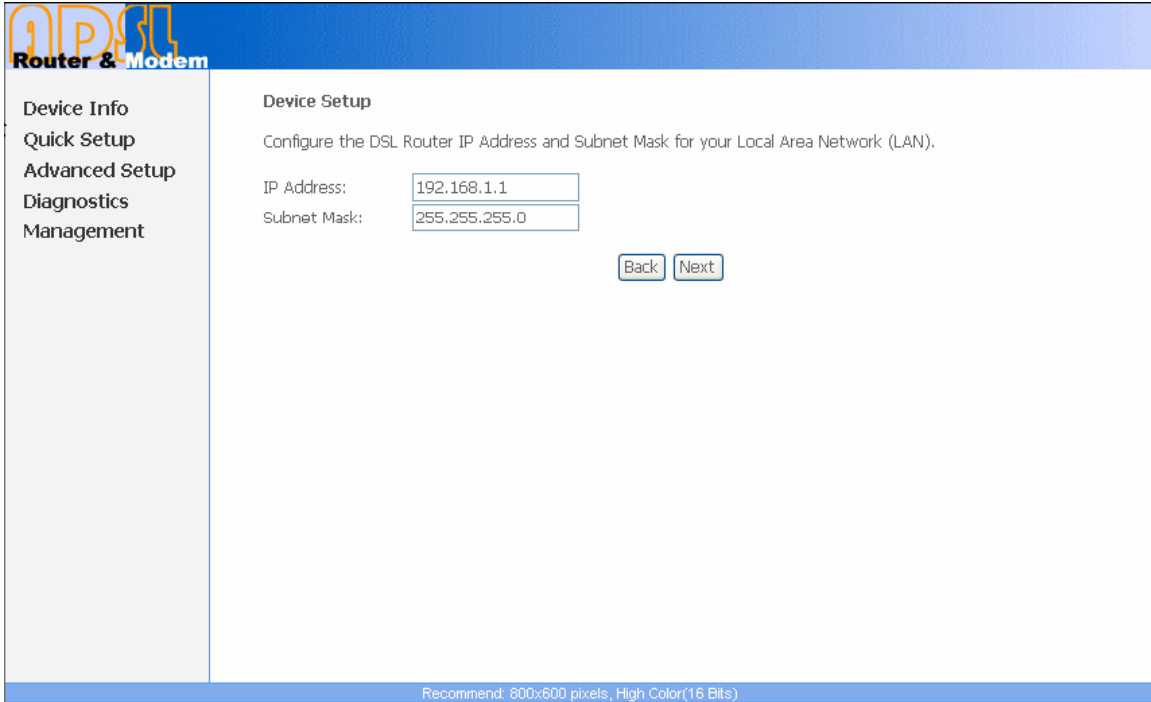


Figure 1.5

Step5. Select “Next” to check the WAN settings as Figure 1.6, then click “Save/Reboot” to save the configuration. Now quick start is completed!

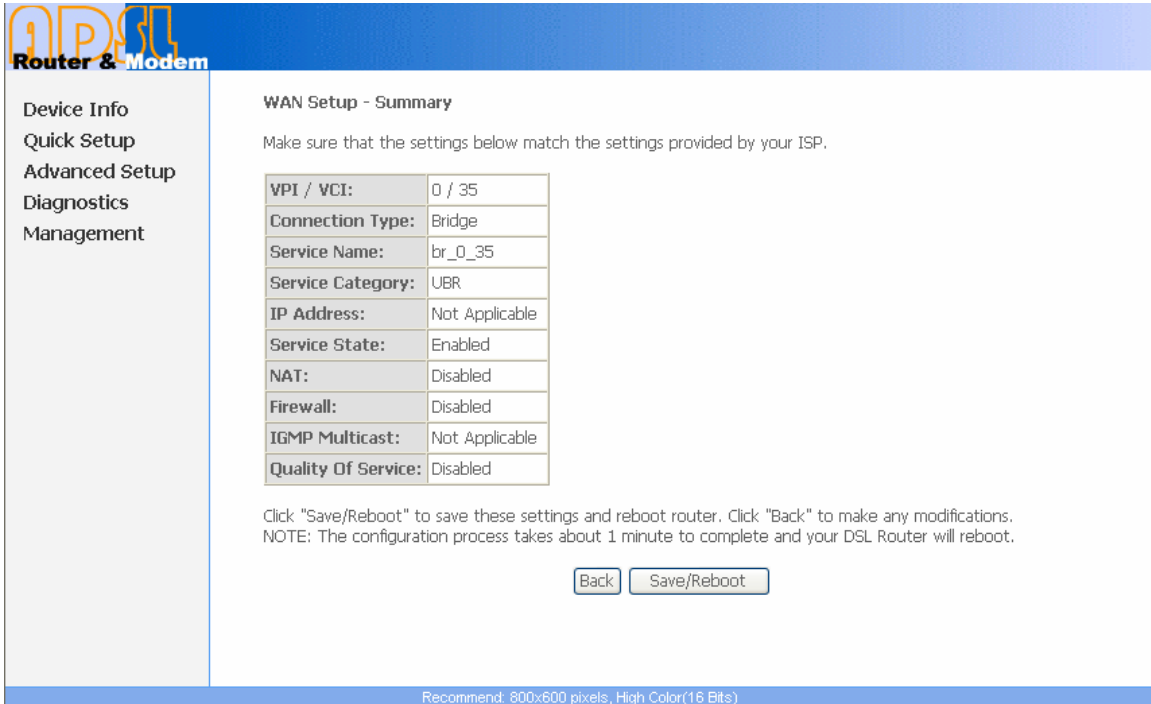


Figure 1.6

Step6. If you don't know the value for VPI/VCI, select the "DSL Auto-connect" as shown in Figure 1.7.

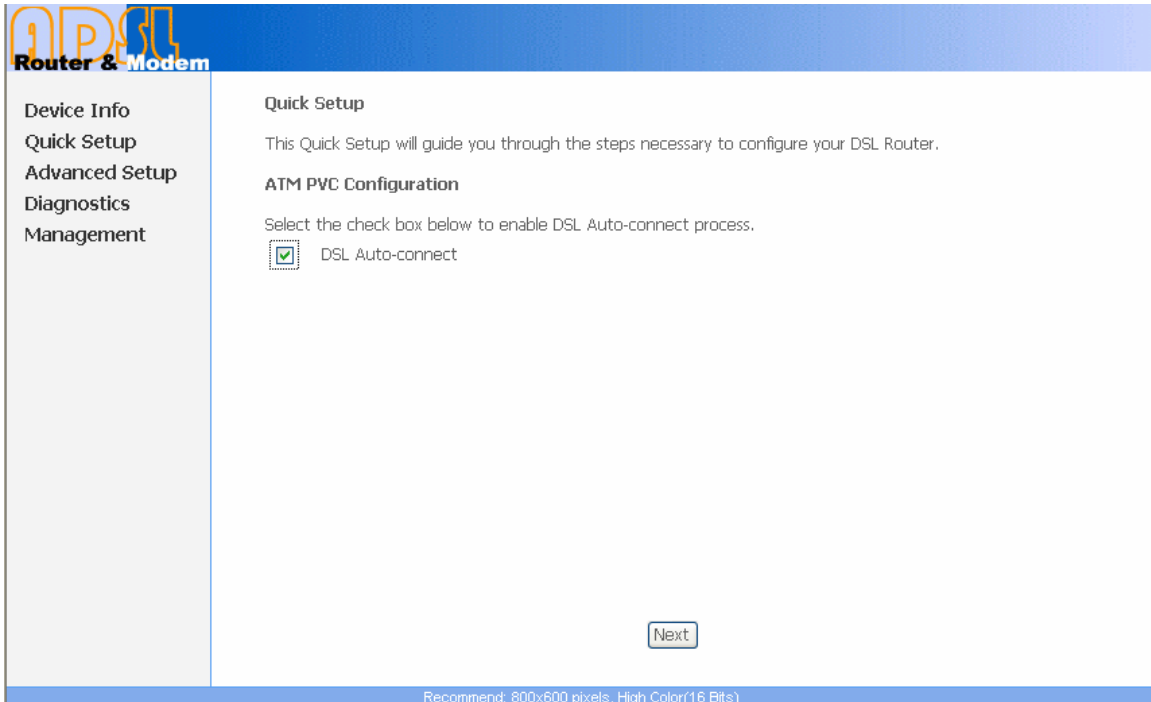


Figure 1.7

Step7. After auto scanning, Figure1.5 automatically will come up, then you can follow step 4 and step 5 to complete the quick setup.

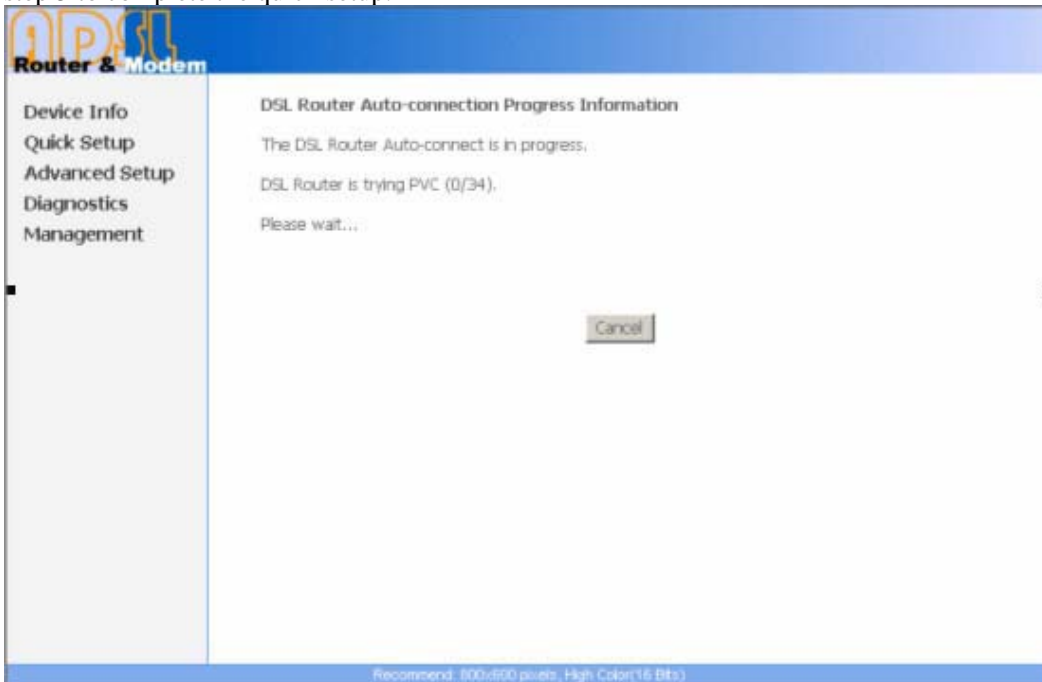


Figure 1.8